

# PT BHUMYAMCA SEKAWAN

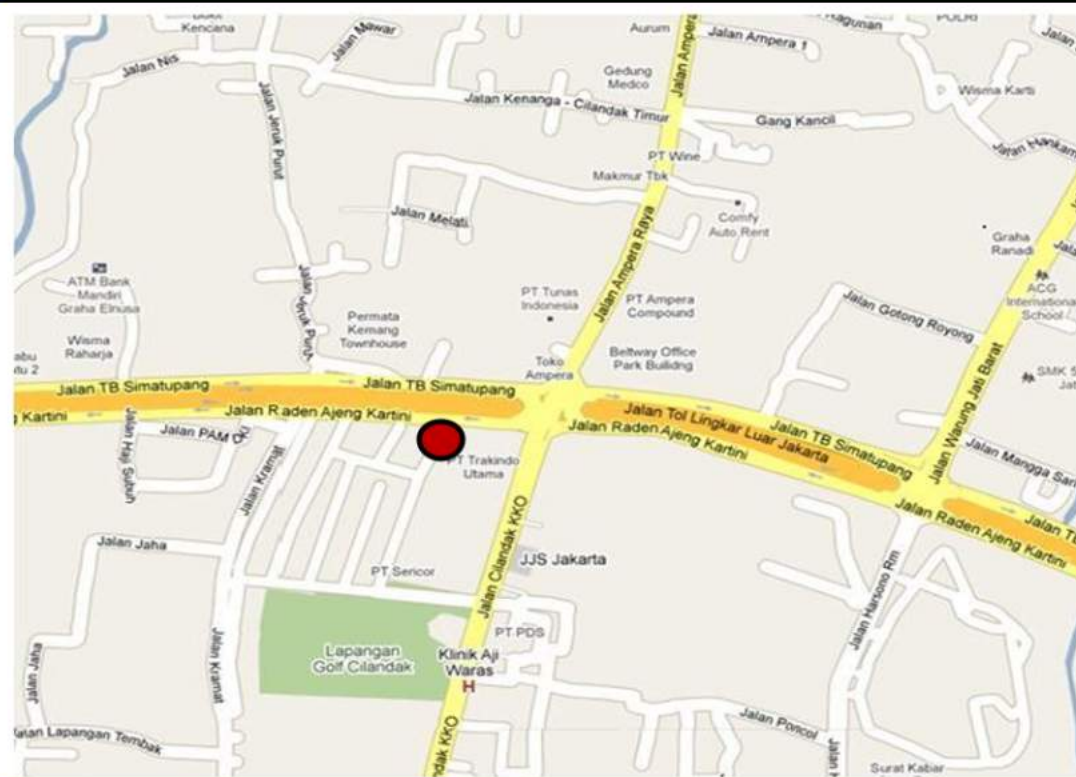
## Cibis Eight

Jalan TB. Simatupang No. 2

Jakarta Selatan

FOR LEASE

### LOCATION MAP



### BUILDING PICTURE



### COMMERCIAL TERMS

#### Availability CIBIS EIGHT #3-22 B

AC Office	: 160.40 sqm
Base Rent (AC Office)	: IDR 200.000/sqm/month
Service Charge	: IDR 40.000/sqm/month
Electricity for AC, lighting and power outlet is separately metered	
Payment Terms	: Quarterly Base Rent and SC in advance
Booking Deposit	: 3 months Base Rent and Service Charge (Shall be regarded as 1st quarter rental)
Security Deposit	: 3 months Base Rent and Service Charge (Refundable, interest free)
Lease Term	: Minimum of 2 (two) years
Overtime Charge	: Not Applicable
Water & Electricity	: Separately metered

#### Telephone

##### SLI

Deposit	: IDR 3.000.000	per line
	fully refundable	
Installation Cost	: IDR 1,750,000.00	per line
	non refundable	

##### Domestic Call

Deposit	: IDR 1.500.000	per line
	fully refundable	
Installation Cost	: IDR 1.500.000	per line
	non refundable	

#### Member Parking (Unreserved)

Motorcycle	: IDR 75,000.00	per vehicle per month
Car	: IDR 250,000.00	per vehicle per month
Card Registration	: IDR 75,000.00	per card

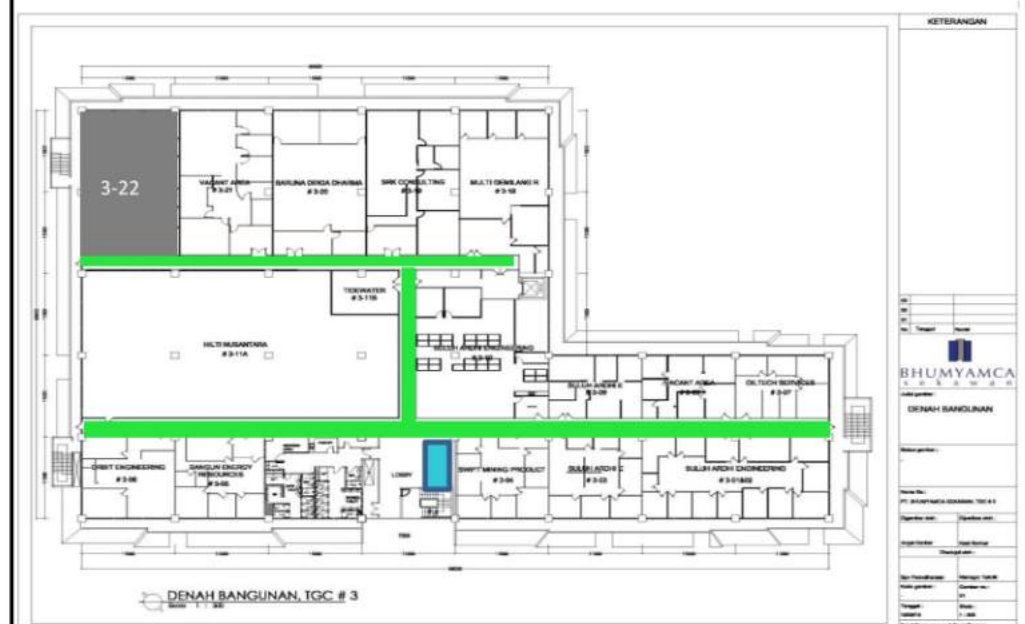
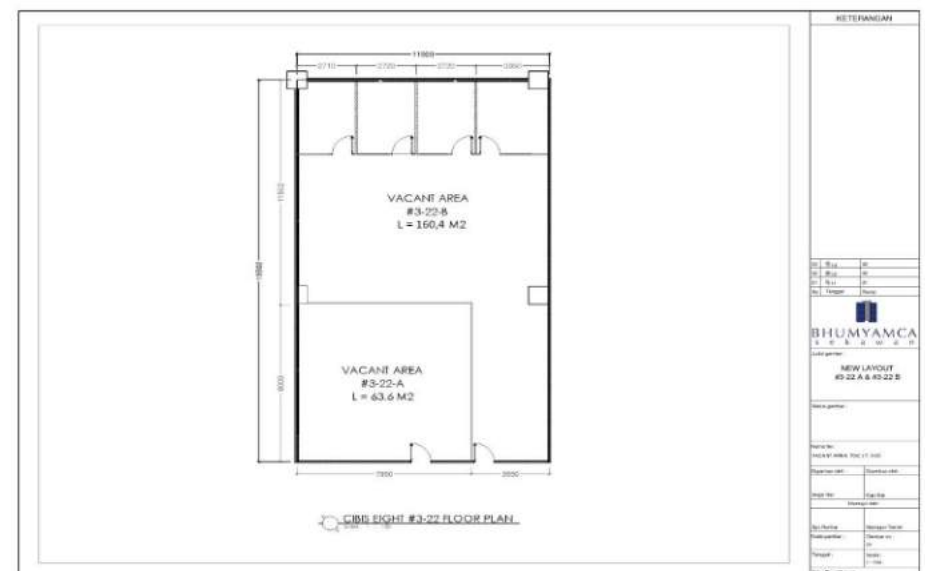
#### Normal Office Hours

Monday - Friday	: 07.00 AM to 06.00 PM
Saturday, Sunday, and Public Holiday	: OFF

Lessor shall ensure Lessee enjoys 24-hours, 7 days a week access to the Demised Premises.

### CIBIS EIGHT BUILDING SPECIFICATIONS

#### FLOOR / BLOCK PLAN



- Corridor
- Lift
- Vacant area #3-22

Number of Floors	Level 3rd sqm
Typical Building Size	160.40 m
Typical Ceiling Height	3.00 KVA
Power Capacity	19.74
Power Back Up	3 Power Genset
Toilet	Male and Female Toilet
	Executive Toilet



PICTURE

